



Maximized Spectral Power for Optimized Phototherapy

Quick Reference Guide

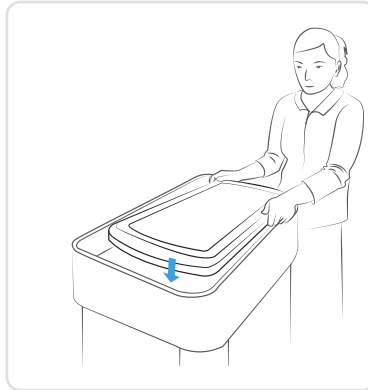
SKYLIFE PHOTOTHERAPY SYSTEM

1 VISUAL INSPECTION



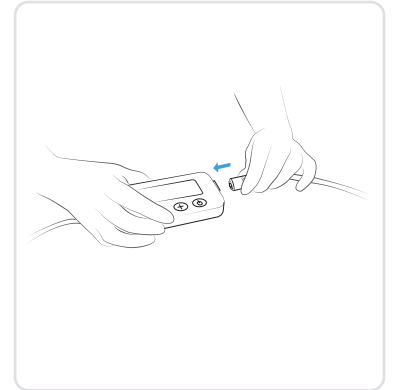
Inspect Skylife for damage or wear. Place CloudCover over device and GelMat.

2 SKYLIFE PLACEMENT



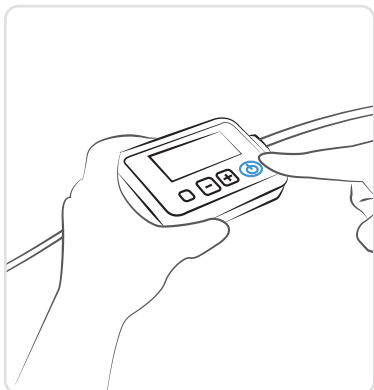
Place Skylife™ Phototherapy unit in location with walls (e.g. bassinet, warmer, crib, or incubator).

3 SUPPLY POWER



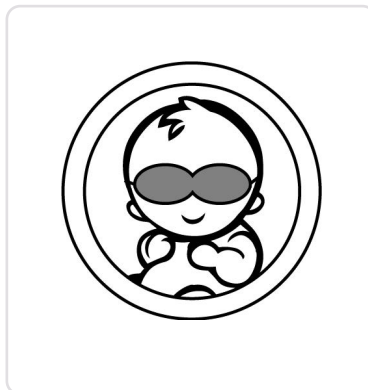
Attach Controller and Power Supply to device and place Controller outside enclosing walls of treatment area.

4 POWER ON



Power on device and check light intensity, following institutional practices.

5 EYE PROTECTION



Shield baby's eyes with protective phototherapy eye mask.

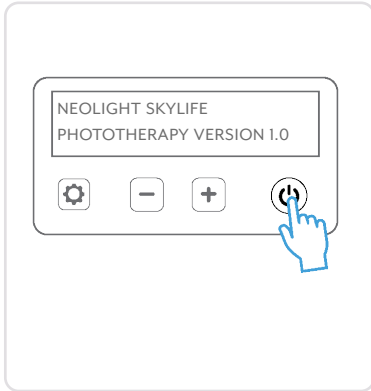
6 BABY POSITION



Position baby on CloudCover. Ensure that only CloudCover and diaper is directly under baby.

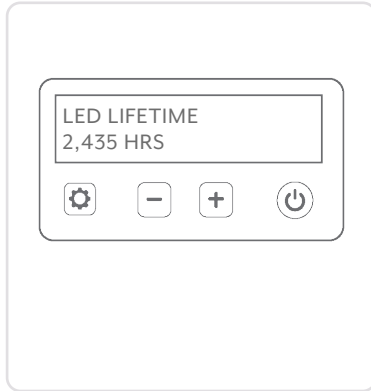
P O W E R O N T H E S Y S T E M

POWER ON



Press and hold power button to **START** device. System notify's once self-check completed*.

SYSTEM HOURS



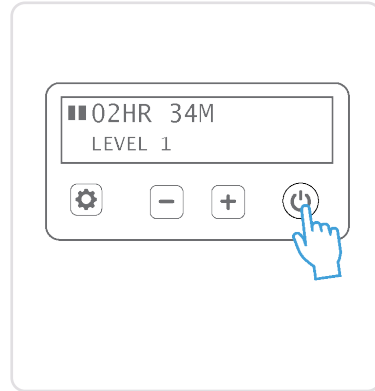
System will display LED lifetime**. Verify that time is less than 25,000 hrs.

LIGHT INTENSITY



Press '+' button once to begin treatment. Use '+' and '-' buttons to increase or decrease light intensity.

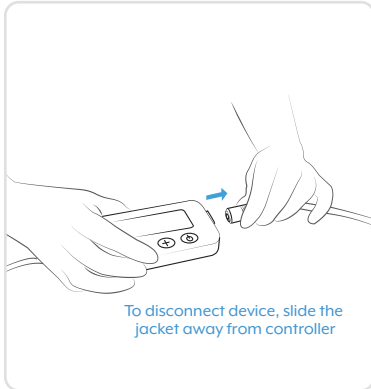
INTERMITTENT THERAPY



Pause treatment, press power button once. Resume treatment, press power button once again.

C L E A N T H E S Y S T E M

POWER OFF



To disconnect device, slide the jacket away from controller

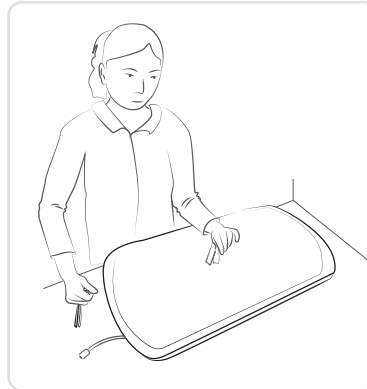
Press and hold power button to turn off. Always turn off and disconnect device from power outlet during cleaning.

REMOVE COVER



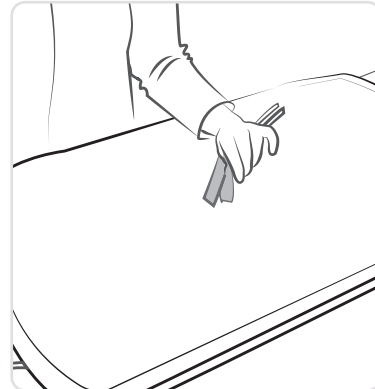
Remove CloudCover. **Do not remove GelMat during cleaning.**

DISINFECT SYSTEM



Wipe down GelMat and exposed edges of Light Bed with disinfectant wipes. Allow surface to dry.

FINISH CLEANING



Remove any remaining chemical residue using clean damp cloth. Allow surface to dry***.

*Actual display may vary based on software version.

** LED lifetime refers to the number of hours the LED modules have been used to date.

*** See Package Insert for Full Instructions, Warnings, Precautions, Contraindications, and Cleaning Instructions

Learn more at theneolight.com
275 N Gateway Dr, Suite 128
Phoenix, AZ USA
hello@theneolight.com

skylife

Maximized Spectral Power for
Optimized Phototherapy

neolight

MKT-002 Rev. C
©2020 NeoLight, LLC. All Rights Reserved